

PENNWEST

reserve

R

2023

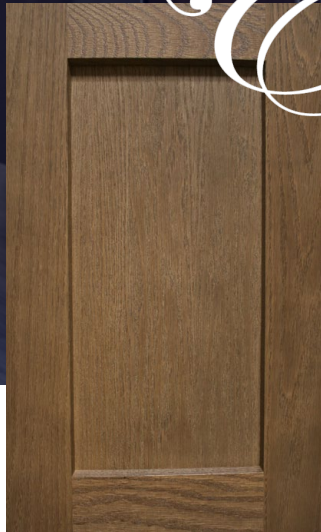
Ultra



PENNWEST
H O M E S

Evermore

Custom Cabinetry



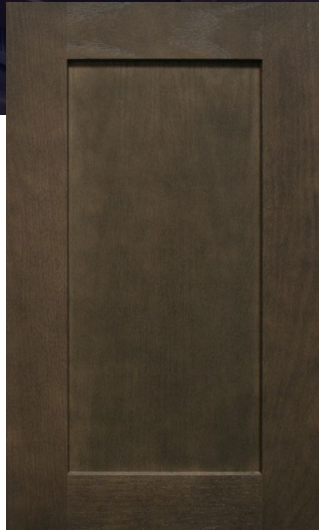
French Country Oak
Mission Flat Panel



Rustic Elm
Mission Flat Panel



Shadow Grey
Mission Flat Panel



Barnwood Oak
Mission Flat Panel



White
Mission Flat Panel

Visit www.KCMA.org
for more information



Precision Cut and Dadoed Construction Fastened and Hot Glued - Ensures a Long Lasting and Square Cabinet Box

3/4 Overlaid Cabinet Doors & Drawer - Limited Exposure of Cabinet Stiles

3/4" Thick Shelving with Finished Edges - Prevents Warping of Shelves

Base and Wall Cabinet Adjustable Shelving - Fit Your Lifestyle

3/4" Face Frames - Durable and Securely Holds Fasteners for Long Lasting Use

Pocket Screws - Ensure a Strong and Square Frame

Dove-Tail Constructed Drawers - Superior Drawer Strength

Undermount Soft Close Drawer Guides

Concealed and Recessed Hinges - Superior Door Strength

Recessed Toe Kick - Work at Counters with Ease

No Exposed Hanging Cleats- More Storage and Cleaner Look

KCMA Testing

- Overhead Cabinets Rated to 500 pound Capacity
- Drawers Opened 28,000 Times with Weight
- Cabinet Doors Opened 25,000 Times
- Extreme Testing of Cabinet Finish

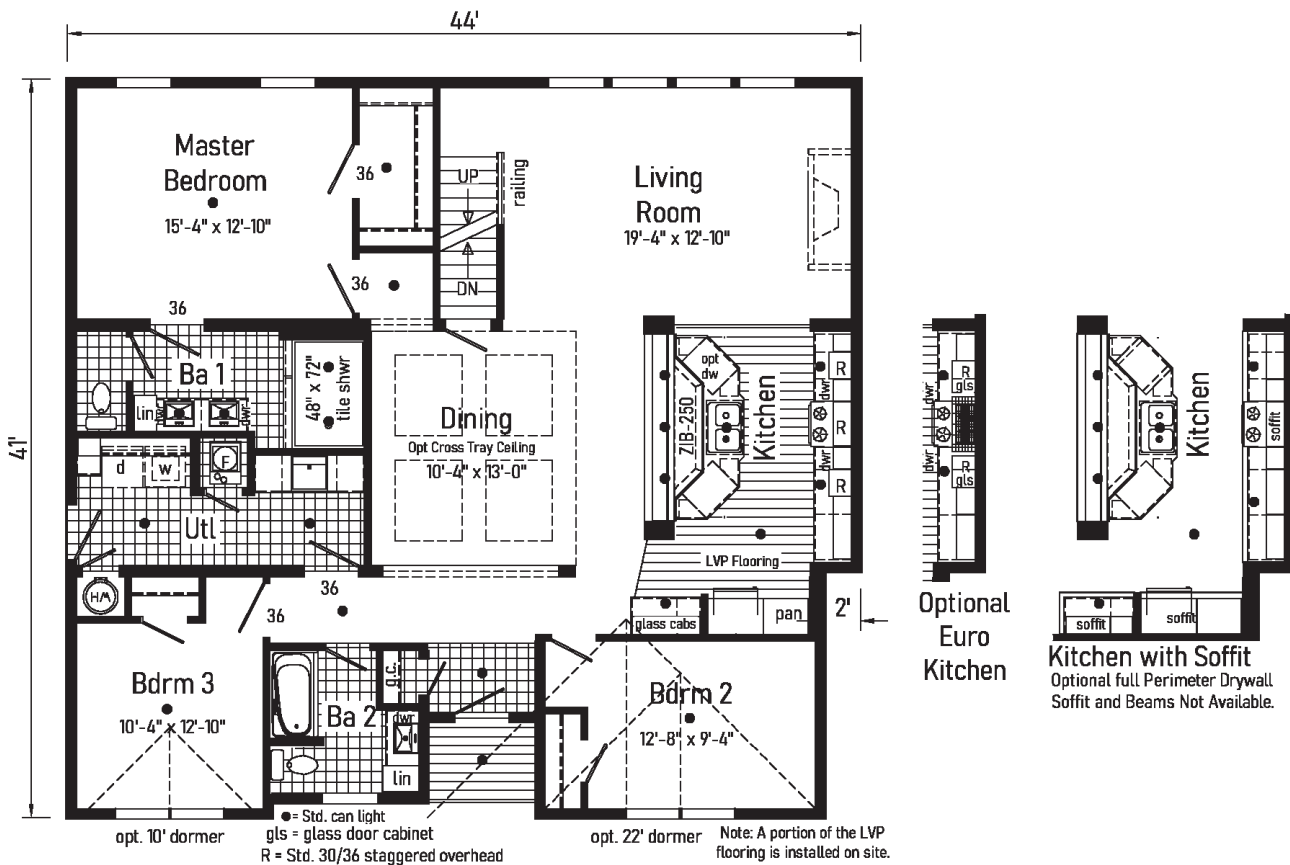
Evermore Custom Cabinets endure a series of rigorous tests, measuring structural integrity. Cabinet doors, drawers and even the finish are tested before earning the KCMA Cabinet Certification.



01

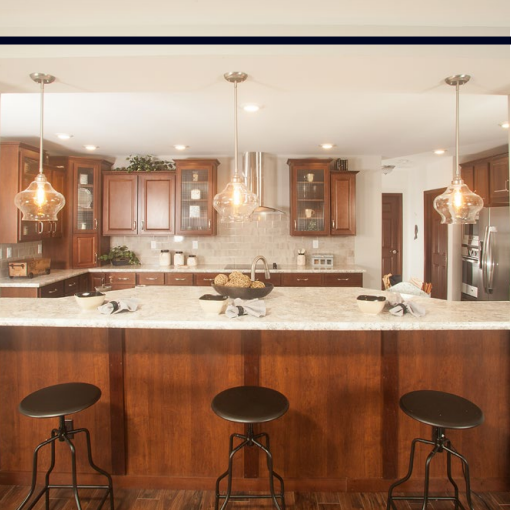
Ultra

4P2401R
42x44 Approx. 1737 sq ft





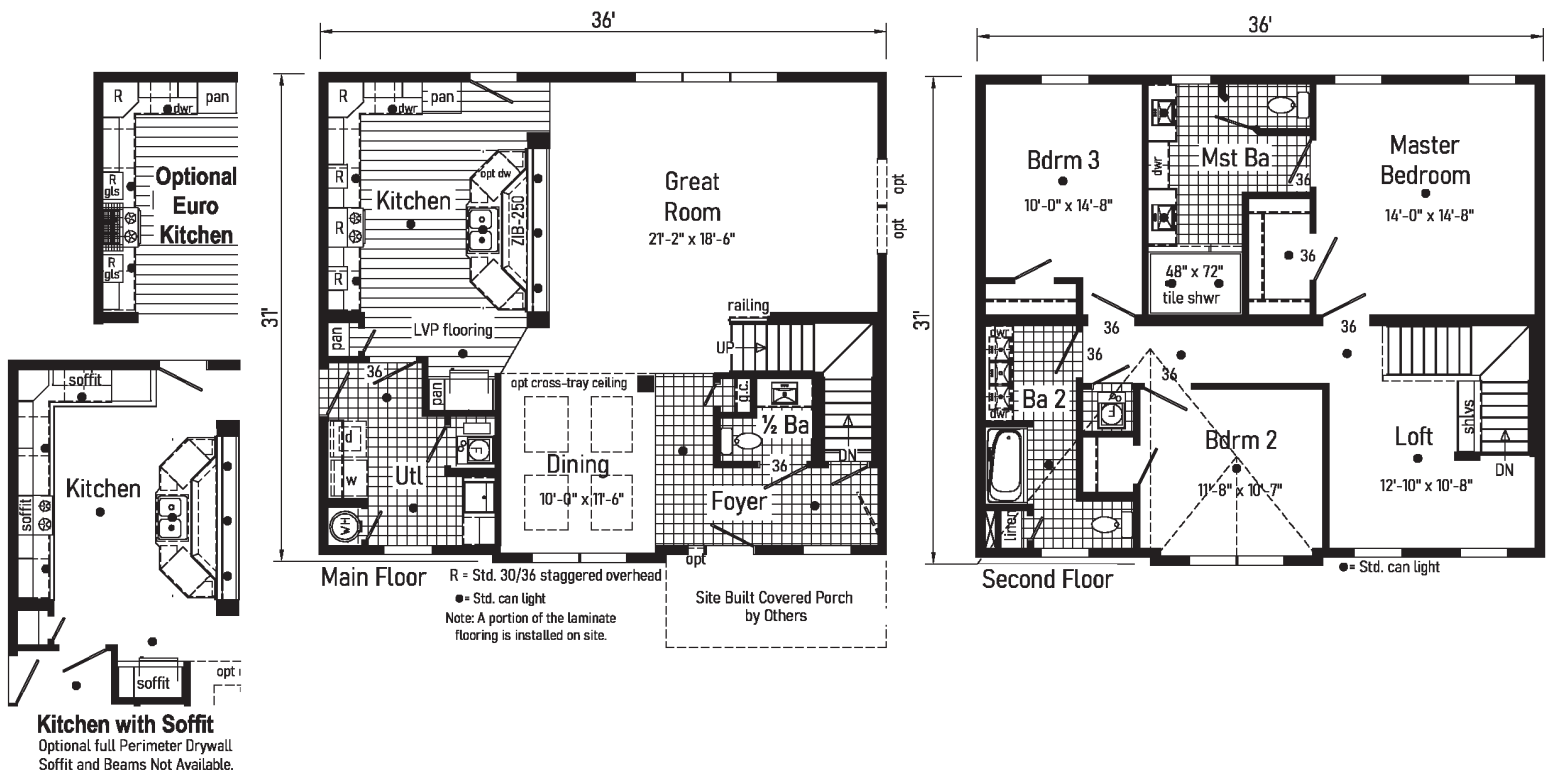
Scan to Watch Video!





04 Ultra

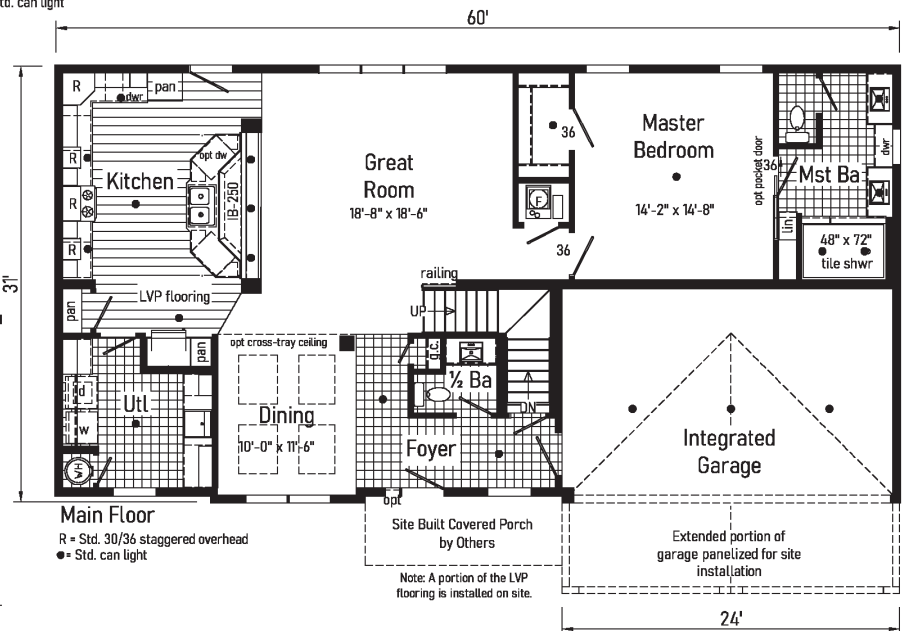
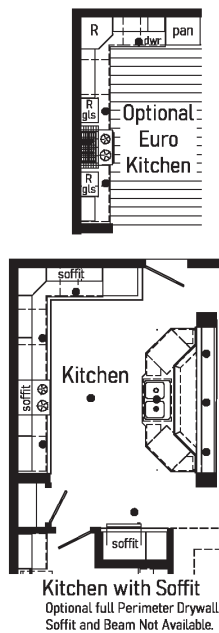
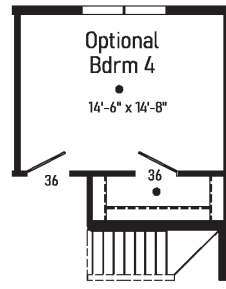
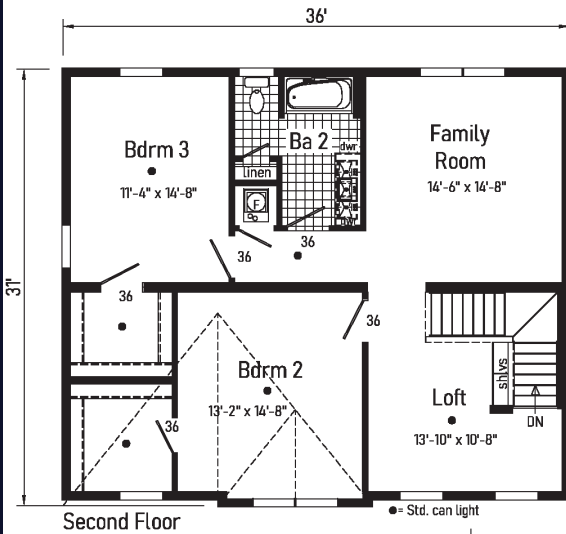
6P2401X
 32x36 Approx. 2206 sq ft





05 Ultra

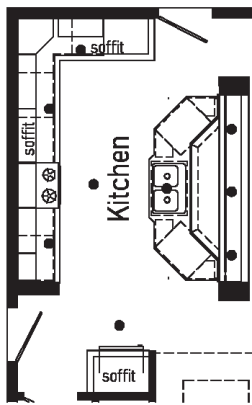
6P2402X
 32x60/36 Approx. 2576 sq ft





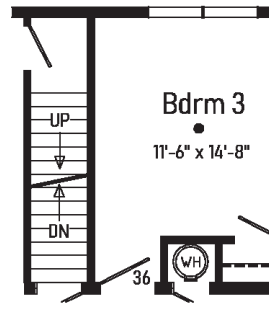
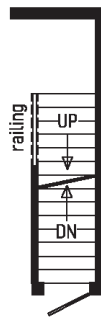
06 Ultra

2P2401X
32x60 Approx. 1827 sq ft

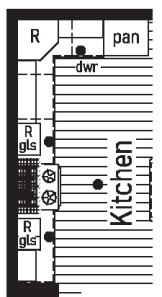


Kitchen with Soffit
Optional full Perimeter Drywall Soffit and Beams
Not Available.

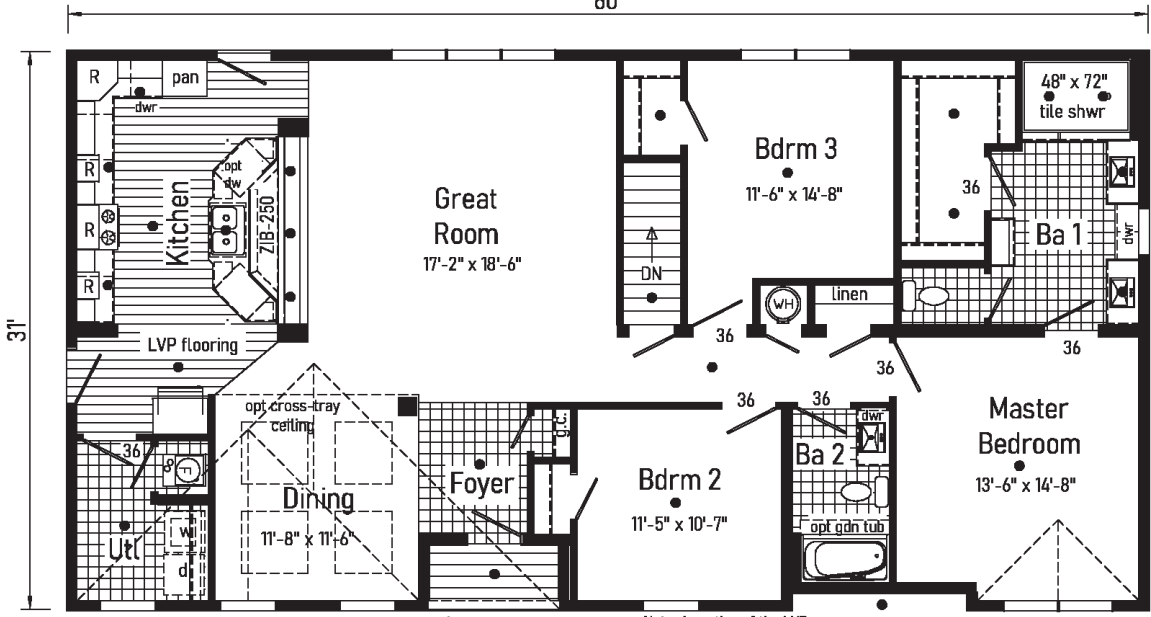
Opt. Open Attic Stairs
Only available with 12/12 roof (omits linen)



Optional Attic Stairs
(omits linen)



Optional Euro Kitchen



opt. 27'-4" twin-peak dormer

• = Std. can light
gls = glass door cabinet

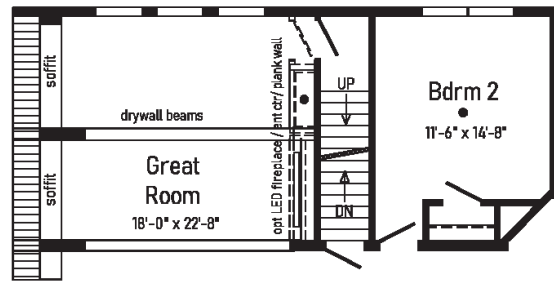
Note: A portion of the LVP flooring is installed on site.

opt. 10' dormer

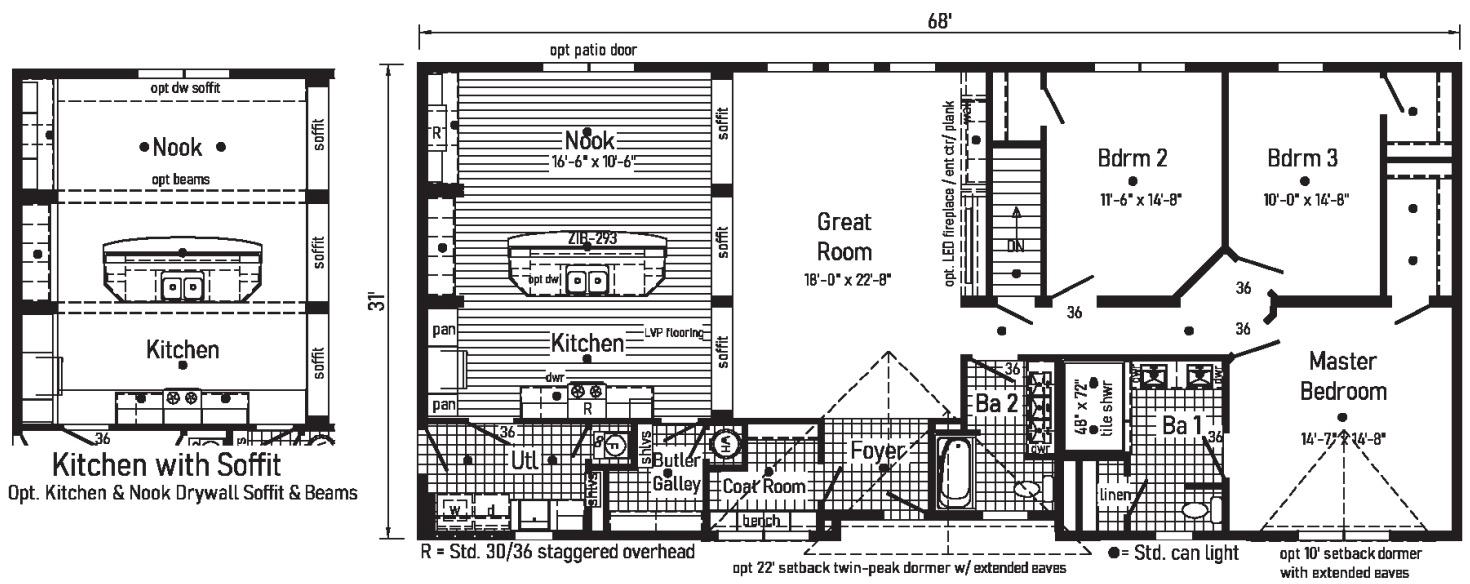


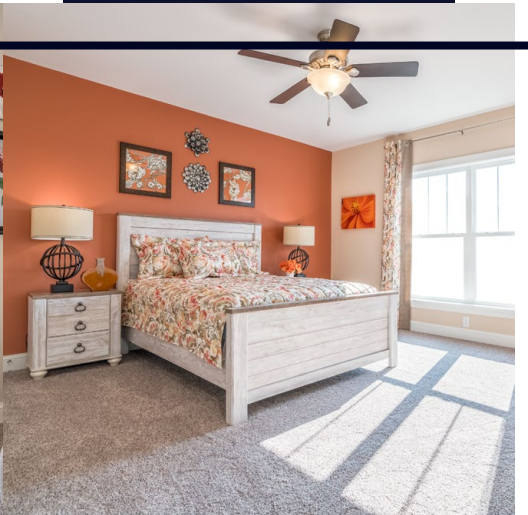
07 Ultra

2P2403X
32x68 Approx. 2089 sq ft



Optional Attic Stairs
Note: Attic stairs requires drywall beams for dropped beams and extended support columns..

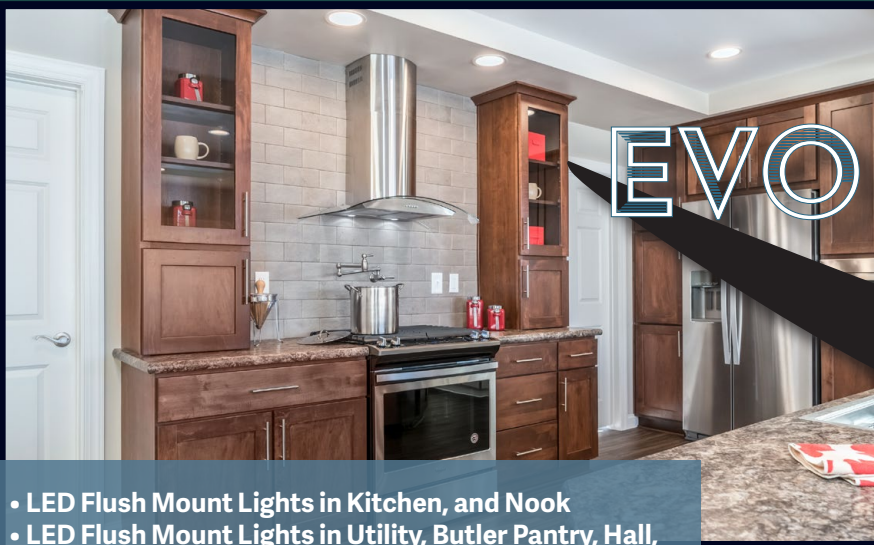




EVOLUTION

BUNDLE

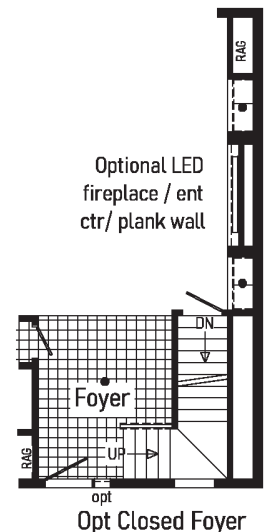
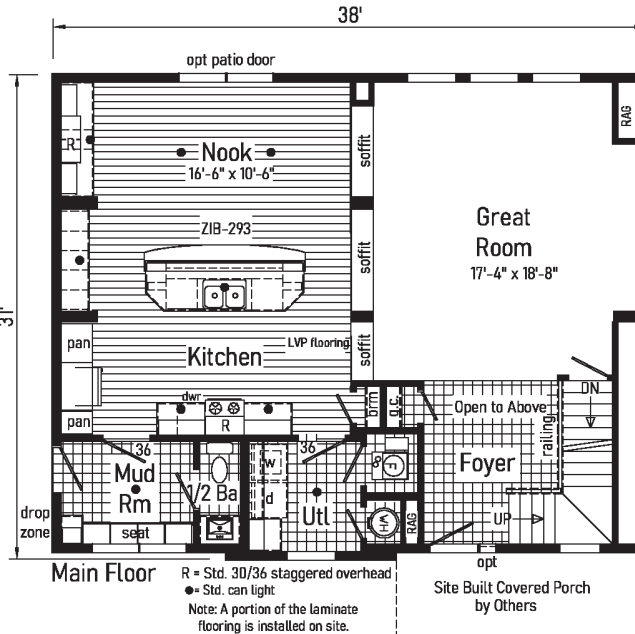
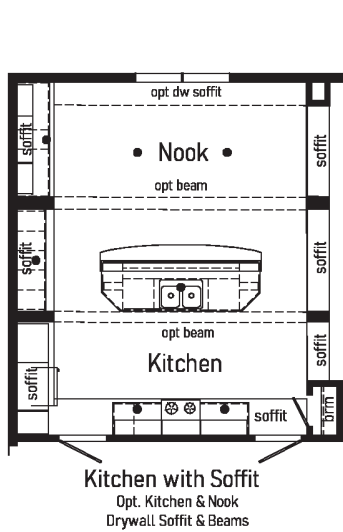
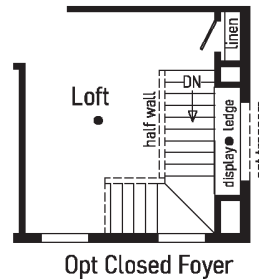
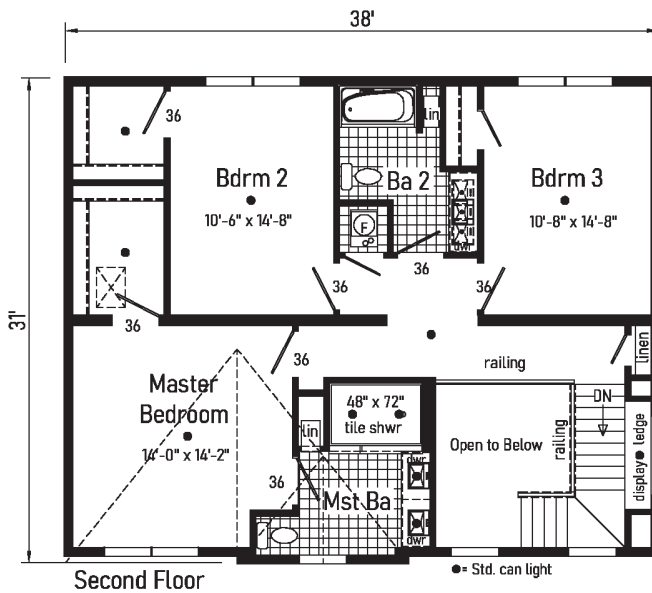
- LED Flush Mount Lights in Kitchen, and Nook
- LED Flush Mount Lights in Utility, Butler Pantry, Hall, and Coat Room
- Drywall Beams in Kitchen and Great Room
- 8'6" Ceiling
- 42" Overhead Kitchen Cabinets with Soffits
- 9' Double Sliding Patio Door
- Transom Window on Kitchen Endwall
- (3) Transoms Above Great Room Windows
- Beverage Center in Nook
- Shiplap Accent Walls
- (2) Appliance Garages in Kitchen
- Chef's Signature Range Hood
- Ceramic Tile Behind Range
- Sliding Barn Door into Coat Room
- LED Fireplace w/ Ceramic Tile and Shiplap Entertainment Center
- Stainless Steel Galley Sink w/ Spring Coil Faucet
- (2) Framed Mirrors Over Master Vanity
- Drywall Soffits w/ LED Flush Mount Lights in Bathroom
- Whirlpool Pearl Appliance Bundle
- Prep For Ceiling Fan in Great Room and Master Bedroom
- Floorte in Kitchen, Utility & Butler Pantry
- 4' x 6' Walk-In Ceramic Shower





08 Ultra

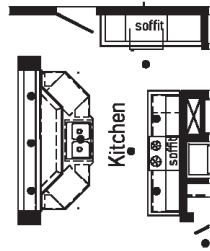
6P2403X
 32x38 Approx. 2329 sq ft



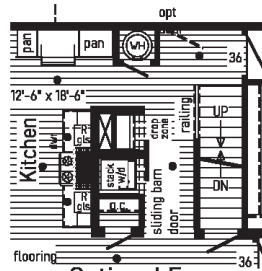


09 Ultra

2P2404X
32x58 Approx. 1780 sq ft

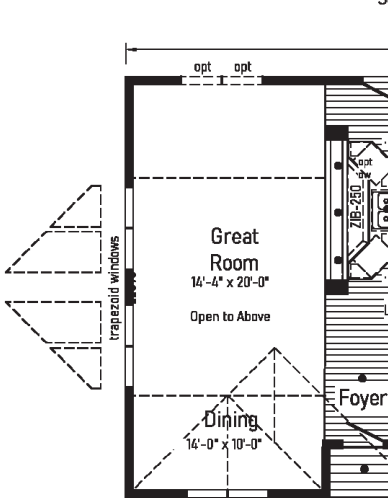


Kitchen with Soffit
Optional full Perimeter Drywall
Soffit and Beams Not Available.

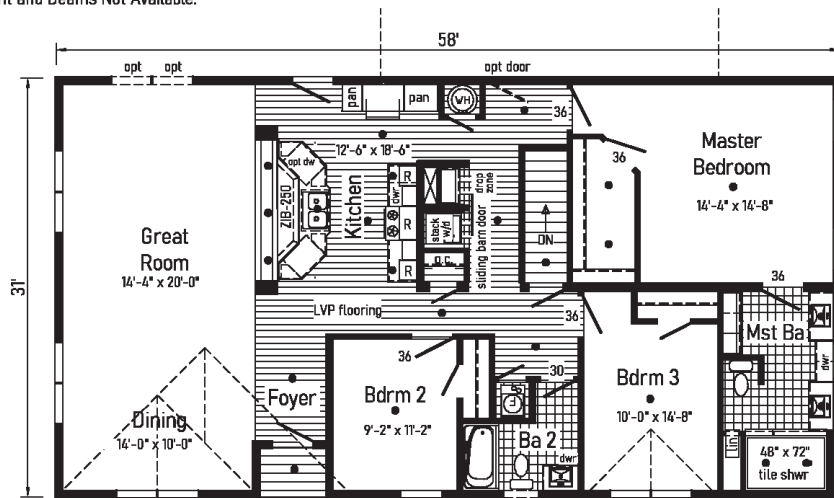


Optional Euro Kitchen

Opt. Open Attic Stairs
Only available with 9/12 or 12/12 roof



opt. 22' twin-peak dormer
Optional Chalet Cape Roof



opt. 22' twin-peak dormer
R = Std. 30/36 staggered overhead

gls = glass door cabinet opt

opt. 10' dormer ● = Std. can light

Note: A portion of the LVP flooring is installed on site.



inHouse
experience



2023

PENNWEST
reserve
R

Pennwest Homes
4 Pennwest Way Route 38
Emlenton, PA 16373
www.pennwesthomes.com

Ultra

Connect with Us!

